

Dogs live even longer on Vetmedin



Use Vetmedin first. Because every day counts



vetmedin®
DUAL ACTING INODILATION

Makes life worth living

QUEST: Largest canine cardio

The **QU**ality of Life and **E**xtension of **S**urvival **T**ime (QUEST) trial is the largest prospective trial in canine cardiology history.

- blinded, randomised, positive-controlled, multi-centred study
- 260 dogs suffering from congestive heart failure (CHF) secondary to MVD
- 28 centres across 11 countries
- 32 Cardiologist investigators
- three year trial
- results published in peer-reviewed Journal of Veterinary Internal Medicine



logy study ever conducted

Primary Objective:

To assess the effect of Vetmedin therapy, in comparison with benazepril on survival time, in dogs with CHF due to mitral valve disease

Europe



What the Cardiologists say –

“Veterinary Cardiologists in Australia agree that treatment with furosemide, pimobendan (Vetmedin) and an ACEi should be used as first line therapy of non-azotaemic dogs, confirmed to have MVD, which present with clinical signs and radiographic evidence of pulmonary oedema.

Where cost or compliance is an issue limiting the use of triple therapy, published studies^{1,2} have shown pimobendan (Vetmedin) and furosemide to demonstrate superior survival times.”

Dr Brad Gavaghan,

BVSc, MACVSc, FACVSc (Cardiology)

Dr Fiona Campbell

BVSc (Hons), MACVSc, PhD., Dip. ACVIM (Cardiology)

Dr Richard Woolley

BVetMed, Dip. ECVIM-Ca (Cardiology)

“This study offers the most compelling evidence to date demonstrating the beneficial effect of pimobendan when compared to benazepril for extending survival in dogs with CHF caused by MVD”¹

Jens Häggström,

DVM, PhD, Diplomate ECVIM (Cardiology)

QUEST lead investigator

“If there are mitigating circumstances that limit the use of triple therapy then a combination of furosemide and pimobendan should be used”

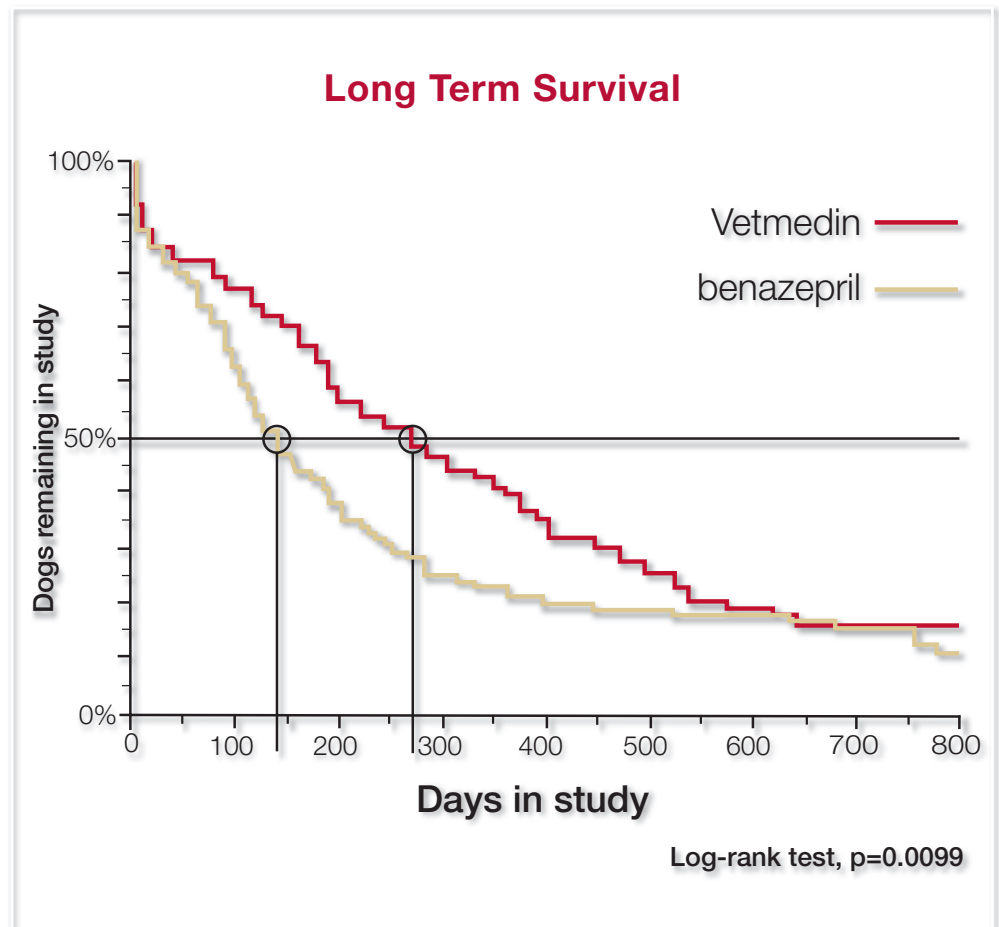
Sonya Gale Gordon,

DVM, DVSc, DACVIM (Cardiology)

[from Managing congestive heart failure (CHF) due to myxomatous mitral valve disease (MMVD) in small to medium size dogs – past, present and future.]

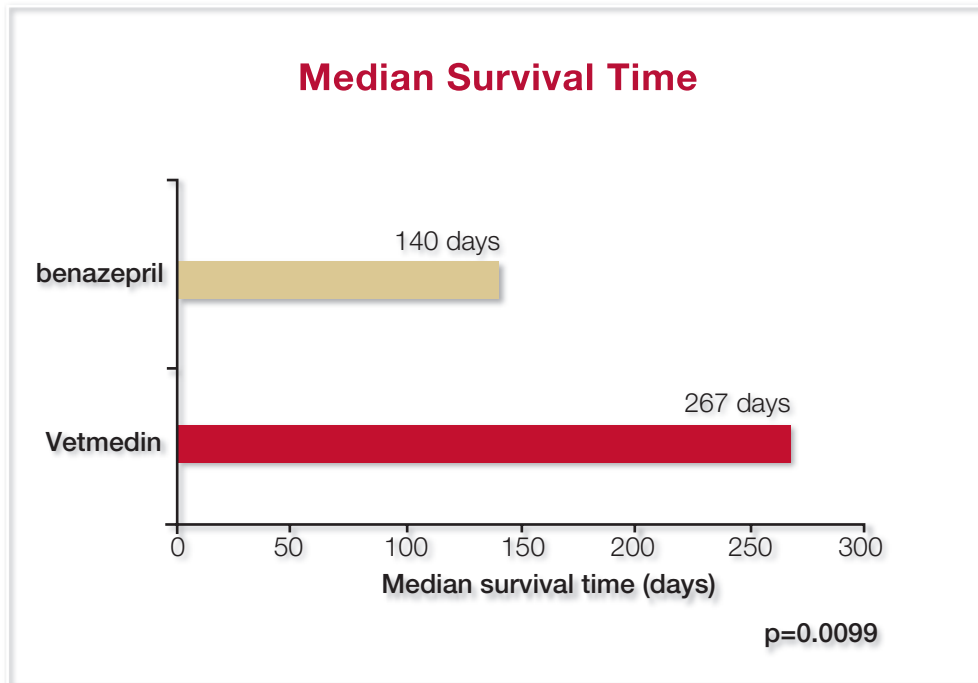
The results: Dogs live even longer

Dogs with congestive heart failure due to MVD live **even longer** when treated with Vetmedin than when treated with benazepril



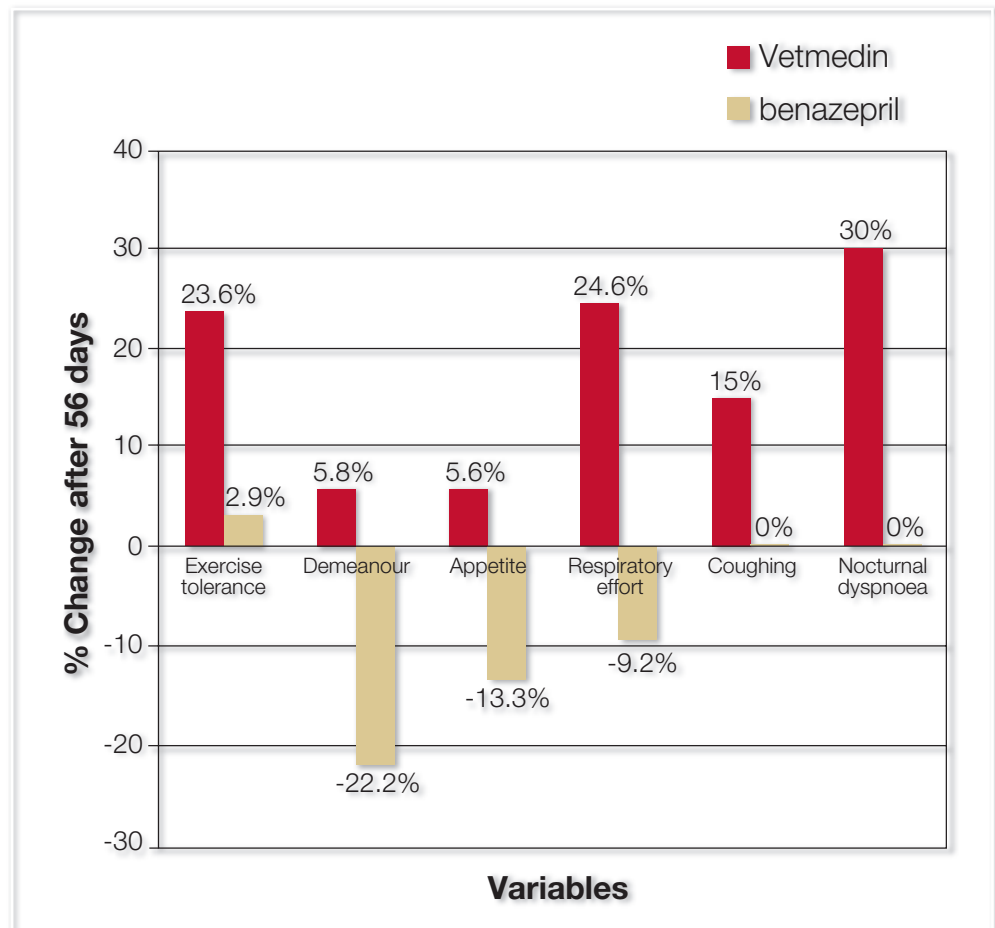
- Vetmedin dramatically improves long term survival of dogs with MVD¹

ger on Vetmedin



- Benazepril-treated cases had a median survival time of 140 days.¹
- Vetmedin-treated cases had a median survival time of 267 days.¹
- Vetmedin treated MVD cases lived almost twice as long¹

Vetmedin outperforms benazepril in improving quality of life



- Vetmedin leads to a rapid reduction in the clinical signs of congestive heart failure²

Head to head comparisons against benazepril in the treatment of MVD consistently demonstrate the superiority of Vetmedin in improving patient quality of life²:

- Coughing
- Exercise tolerance
- Demeanour
- Appetite
- Respiratory effort

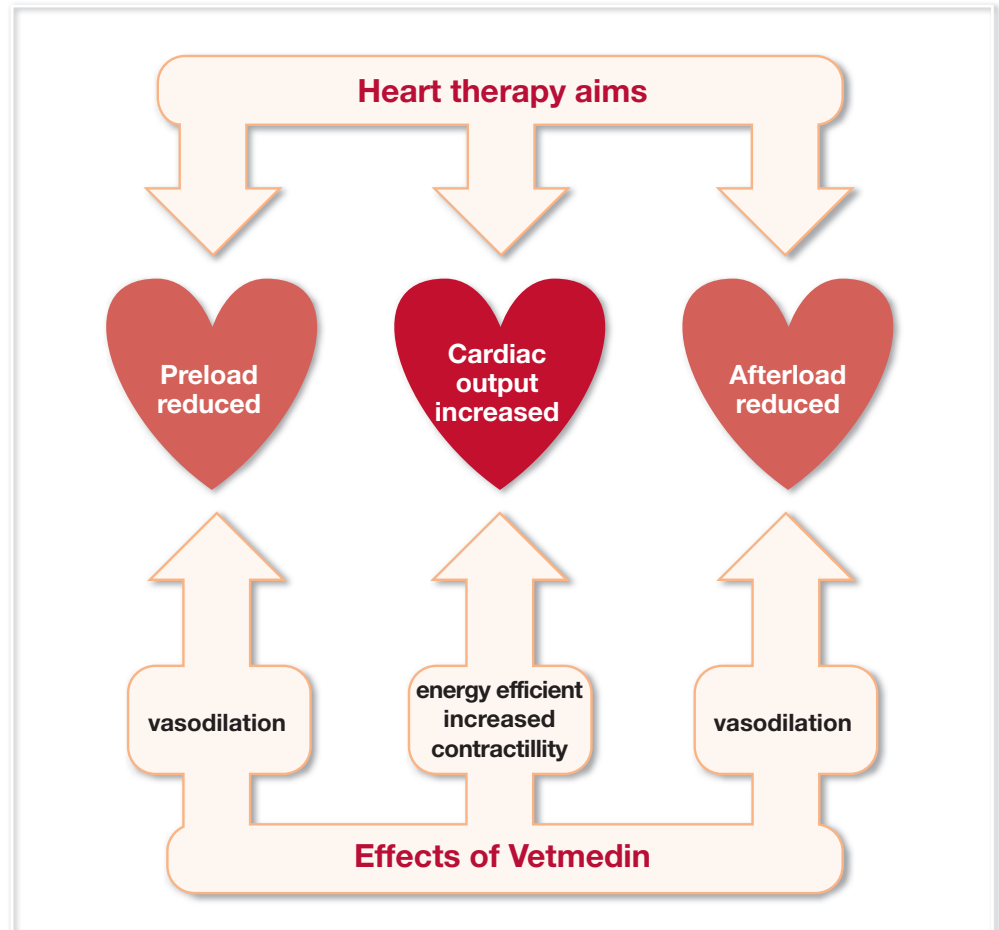
Vetmedin. Essential first line therapy



Vetmedin therapy instituted at the first clinical signs of CHF provides the best treatment option available for your patient

Vetmedin.

Dual Mode of Action



Only Vetmedin meets all aims of CHF therapy

Action 1: Balanced Vasodilation

- Vetmedin, like ACE inhibitors, is a potent vasodilator
- The vasodilation achieved reduces both preload and afterload

Action 2: Cardiac Output Improvement

- Vetmedin increases myocardial contractility efficiently
- This directly increases cardiac output

Goals of CHF treatment	Vetmedin	benazepril
Reduce preload	✓	✓
Reduce afterload	✓	✓
Balanced vasodilation	✓	✓
Energy efficient increase in heart contractility ²	✓	✗
Directly increase cardiac output ⁴	✓	✗
Reduce heart size ²	✓	✗
Provide response quickly (in 48 hours) ³	✓	✗
Reduce required diuretic dose ²	✓	✗
Longer life ¹ (versus benazepril)	✓	✗
Rapid and sustained improvement in quality of life ²	✓	✗

Use Vetmedin first. Because every day counts

*“Vetmedin is a novel drug in cardiac therapy.
It reduces workload for the heart, improves cardiac
contraction and also improves myocardial relaxation.”*

Dr Brad Gavaghan,
BVSc, MACVSc, FACVSc (Cardiology)

**For more information
please contact:**

Australia
1800 226 315 or visit
www.vetmedin.com.au

New Zealand
0800 802 461 or visit
www.vetmedin.co.nz

-
1. Häggström, J. *et al* Effect of Pimobendan or Benazepril Hydrochloride on Survival Times in Dogs with Congestive Heart Failure Caused by Naturally Occurring Myxomatous Mitral Valve Disease: The QUEST Study *J Vet Intern Med* 2008; Sep-Oct 22(5):1-12
 2. Lombard, C. *et al* Clinical Efficacy of Pimobendan Versus Benazepril for the Treatment of Acquired Atrioventricular Valvular Disease in Dogs, *J Am Anim Hosp Assoc*, 2006; 42:249-261
 3. Roland, RM. *et al* Acute Cardiovascular Effects of Pimobendan in Dogs with Stable Congestive Heart Failure due to Chronic Degenerative Atrioventricular Valve Disease 2006 *ACVIM*
 4. Häggström, J. *et al* Short-term Effects of Pimobendan on Pulmonary Transit Times and Neuroendocrine Profile in Dogs with Decompensated Myxomatous Mitral Valve Disease 2007 *ECVIM-CA*

Boehringer Ingelheim Pty Ltd. ABN 52 000 452 308. Vetmedica Division. 85 Waterloo Rd, North Ryde, NSW, 2113. Boehringer Ingelheim (N.Z.) Limited. Vetmedica Division. Unit 9, Level 1, 42 Ormiston Rd, East Tamaki, Auckland 2016.

Prescription Animal Remedy (**P.A.R.**) Class 1. For use only under the authority or prescription of a veterinarian. Registered pursuant to the ACVM Act 1997, No. A7867, A7868, A9130, A9699, A9701. Vetmedin contains pimobendan. BOE804014
